

# The Sustainability Action Fund Key Progress Indicators



## **SUSTAINABILITY ACTION FUND**

2020-2021:  
A year in a glance

# Table of Contents:

## Introduction

## Qualitative Metrics

KPI 1. Key Event Metrics

KPI 2. Engagement Metrics

KPI 3. Living Lab Stakeholder Marginal Cost

KPI 4. Total Faculty Participation

KPI 5. Faculty Collaboration on Projects

KPI 6. Food Sustainability Metrics

## Global Annual Metrics

KPI 7. Total Allocated by Project Theme

KPI 8. Projects Funded by Sustainability Issue

## Multi-Year Trends

KPI 9. Quantity of Applications by Funding Decision

KPI 10. Average Amount Funded Per Project

KPI 11. Funding Gap

## Conclusion



Qualitative Metrics

Global  
Annual  
Metrics

Multi Year Trend  
Metrics

# Introduction

This is the final KPI report which corresponds to the SAF 2017-2020 strategic directions outlined below for reference. Over the summer of 2020, the SAF created new strategic directions which will be used to inform KPI reports in the future.

1. Enable project autonomy, sustainable growth and long-term success
2. Strive for organizational excellence
3. Foster inclusion, diversity and interdisciplinarity
4. Explore the campus as a living laboratory for sustainability action

Despite the challenges we all faced this year, the SAF was proud to support 28 project and we were grateful to have received 42 applications. Out of the 28 funded project, 19 project leaders completed their final reports which is equal to 68% completion rate.

## SAF Funded Project's from June 2020 - May 2021

Space Between	\$100.00
JM Sustainable Business Group	\$225.00
Mental Health in the Black Community	\$250.00
Let's Talk About Post-Secondary Education	\$504.75
Nicaraguan Film	\$590.00
BUYPOC	\$930.00
Waste Not Want Not	\$1,000.00
CEED Film	\$1,000.00
Sex Work Law Reform	\$1,200.00
Coop Bookstore Web Platform	\$1,312.00
IGEM Synthetic Meat	\$1,415.00
Information Clinic for Her	\$1,500.00
Volta	\$1,750.00

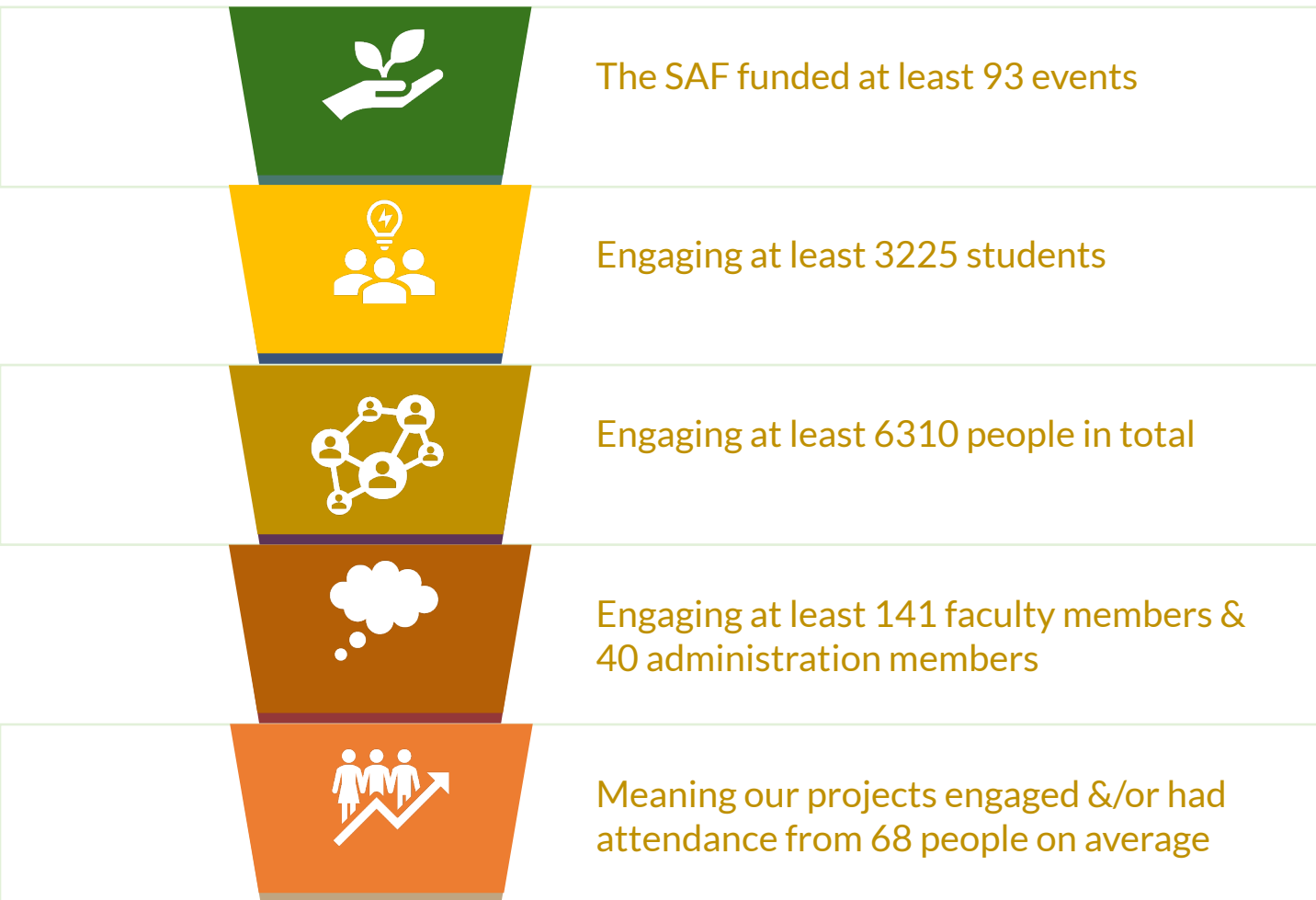
Mango Lemon Soda	\$2,000.00
NDDJ	\$2,000.00
Climate Crisis AI Hackathon	\$2,756.00
De Souche	\$2,970.00
CATSOCAA Series	\$3,000.00
Connect Communicate Cultivate	\$3,050.00
FLY	\$3,500.00
FASA Anti-O	\$3,500.00
Urban Sprawl Map	\$4,665.00
Shoe Leather Risography	\$5,000.00
Frigo Food Baskets	\$5,000.00
Mapping Disappearing Landscapes	\$7,840.00
Living Labs: Mind.Heart.Mouth	\$17,000.00
Living Labs: Land as our Teacher	\$25,000.00
Living Labs: CP3	\$27,317.00
<b>Total Funds Allocated</b>	<b>\$126,374.75</b>

To support student project leaders during this challenging time, the SAF organized a 101-workshop series during the winter semester. The workshop resources are available on [our website here](#) and are also outlined below:

- **Grant writing 101**
- **Community Organizing 101**
- **Solidarity Entrepreneurship 101**
- **Budgeting and Accounting 101**
- **Anti-Oppressive Frameworks 101**

# Qualitative Metrics

## KPI. 1 Key Event Metrics



The qualitative metrics used in this KPI analysis were self-reported from our funded projects final reports. Since only 68% of our projects had completed their final reports at the time of this publication, the event metrics outlined above represent only a fraction of the actual impact the SAF's funded projects had in the 2020-2021 fiscal year.

Due to online classes and remote working lifestyle this year, these events were all conducted online. In past years events the SAF funded had bigger attendance which we expect to see again once when in-person activities resume.

## KPI 2. Engagement Metrics



We funded opportunities for **145 artists** to showcase their sustainable work and 76% of those artists identify as LGBTQIA+ &/or BIPOC.



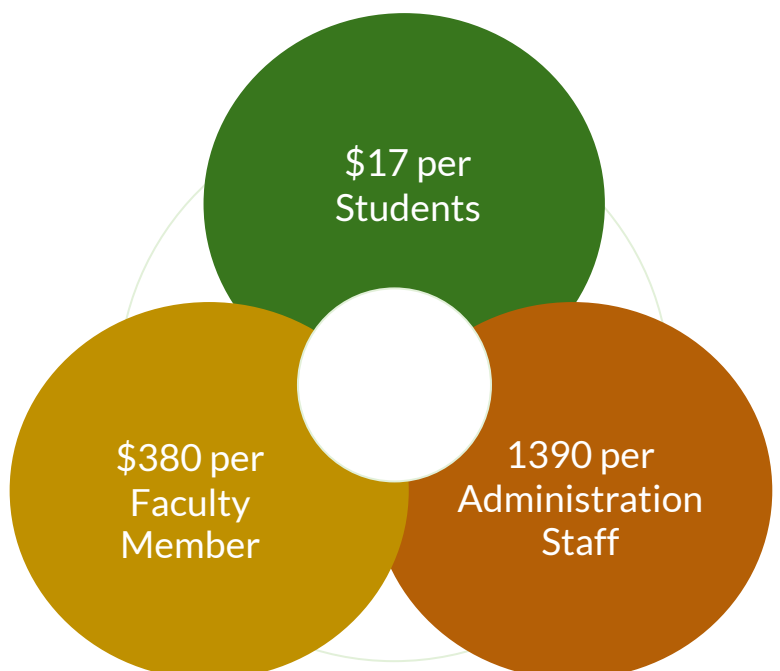
We funded additional sustainable learning opportunities for **278 students** who each received course related benefits.



We funded sustainable opportunities for **157 volunteers** who each spent **32 hours** on average per project.

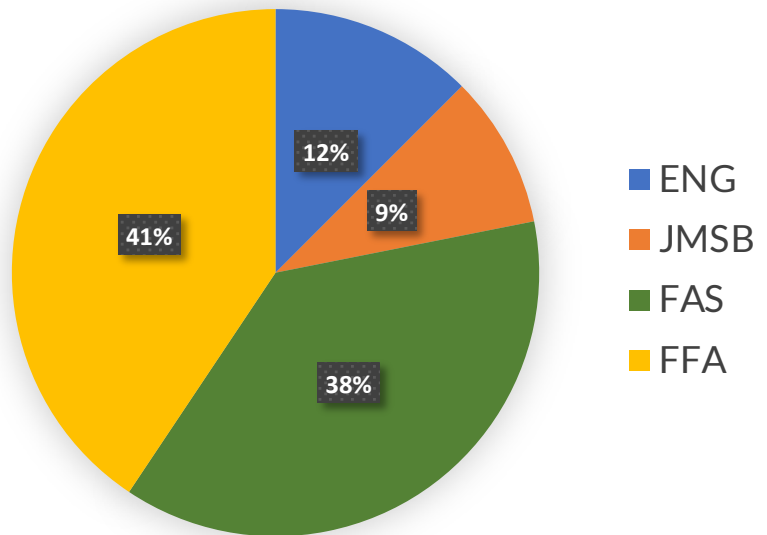
## KPI 2. Living Lab Stakeholder Marginal Cost

As per our strategic directions, the SAF has been encouraging its projects to include multistakeholder participation. This represents how much the SAF invests per stakeholder. What is interesting is that faculty member engagement remained constant over the pandemic, but administration participation required a substantially larger investment than previous years.



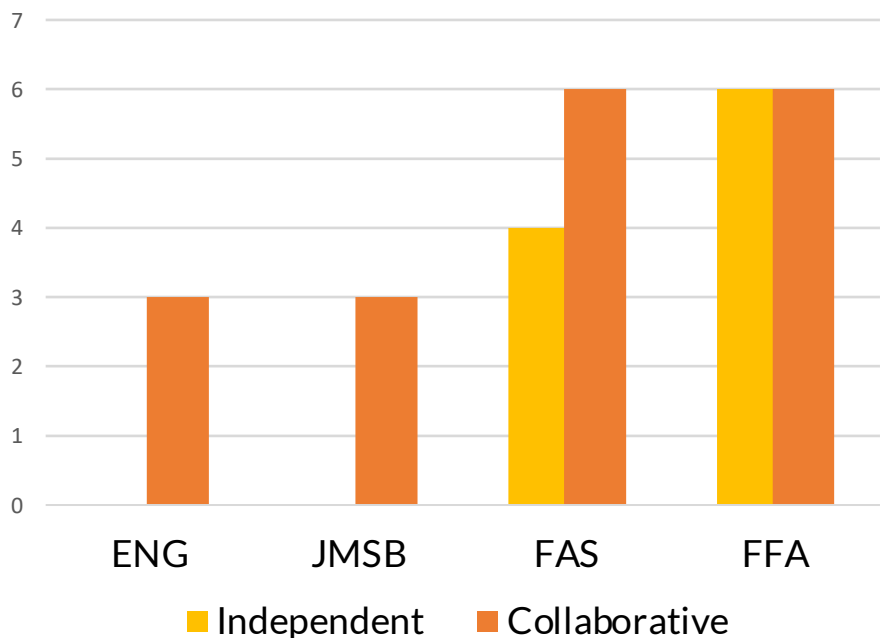
## KPI 4. Total Funded Per Faculty

Student participation in SAF funded projects experienced a large shift this year. Typically, we experience Arts & Science (FAS) students as the largest group, which is in line with the population of the Concordia. This year, however, Fine Arts (FFA) students were the largest group involved with SAF funded projects.



## KPI 5. Faculty Collaboration on Projects

This KPI shows that FAS and FFA students typically collaborate. Meanwhile, JMSB and ENG students typically collaborate. Usually, we experience more inter-faculty collaboration, but remote learning enabled more silos.



## KPI 6. Food Sustainability Metrics



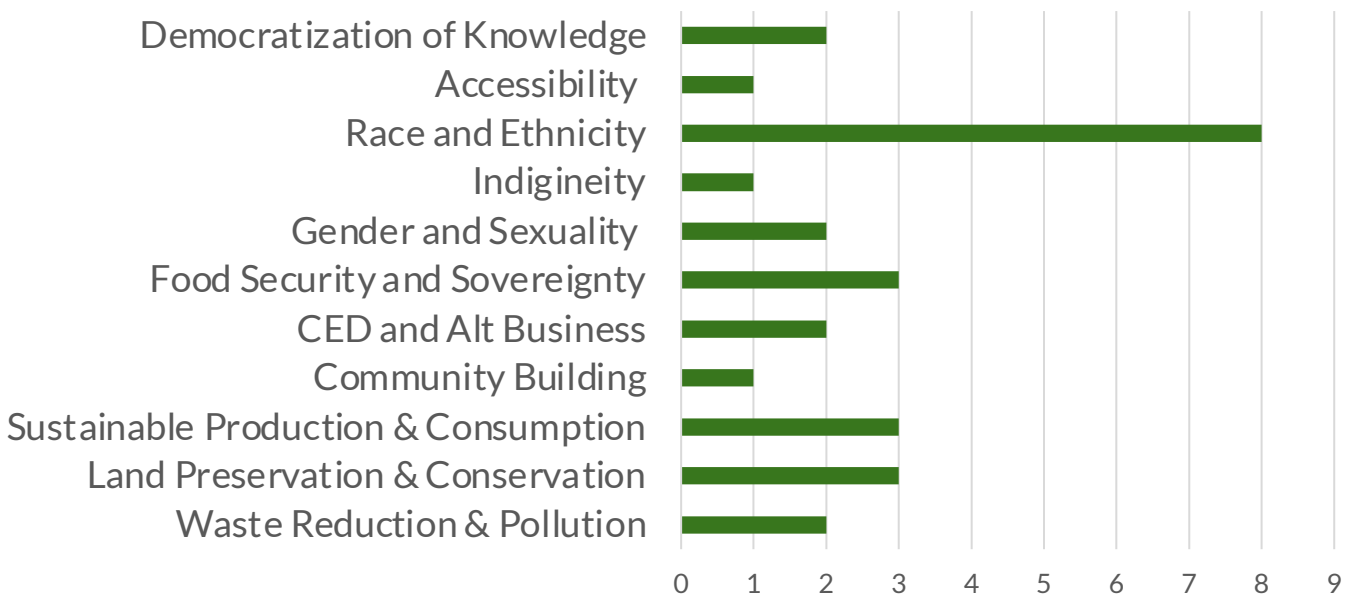
1344 people were fed sustainably by SAF funded projects

All food provided by SAF funded projects were sourced local &/or organic

Only one SAF funded project used plastic and it was a very minimal

## Global Annual Metrics

### KPI 7. Projects Funded by Sustainability Topics

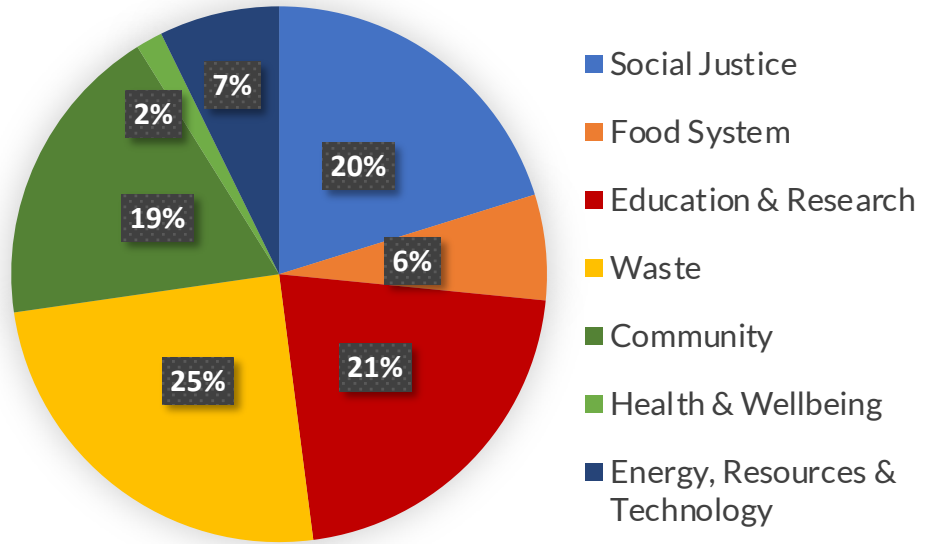


Student project leaders recognized the momentum of the Black Lives Matter movement and organized 8 projects in response! This year the SAF funded and received the greatest amount of race and ethnicity based project applications.



## KPI 8. Total Allocated By Project Theme

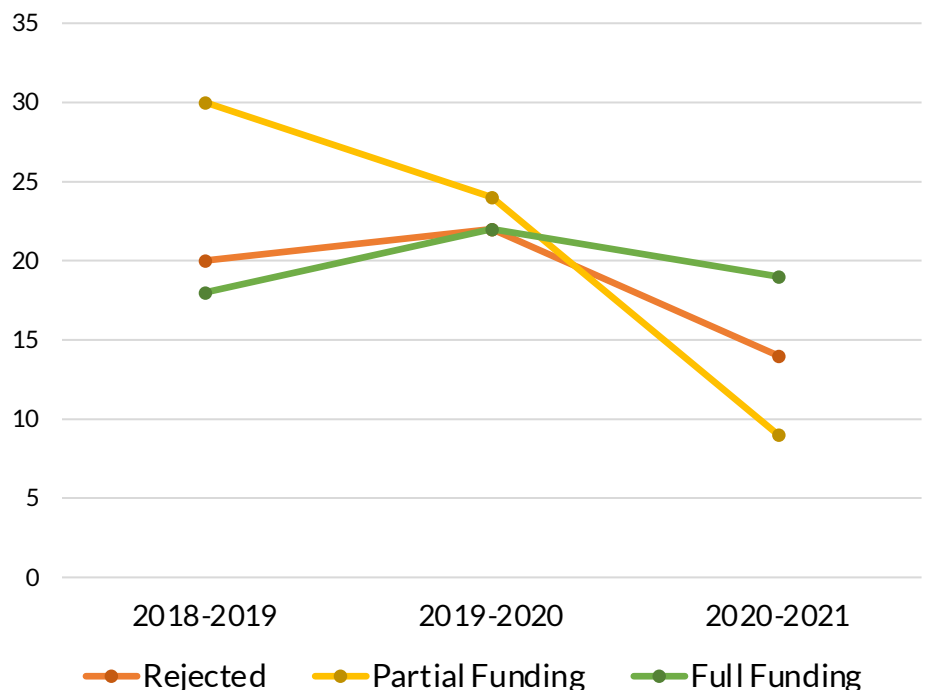
This classic metric shows how much from the total allocated (\$126,374) that was given to each of sustainability themes recognized by the SAF. This year our highest funded theme was waste, followed closely by education & research, social justice, and community, respectively.



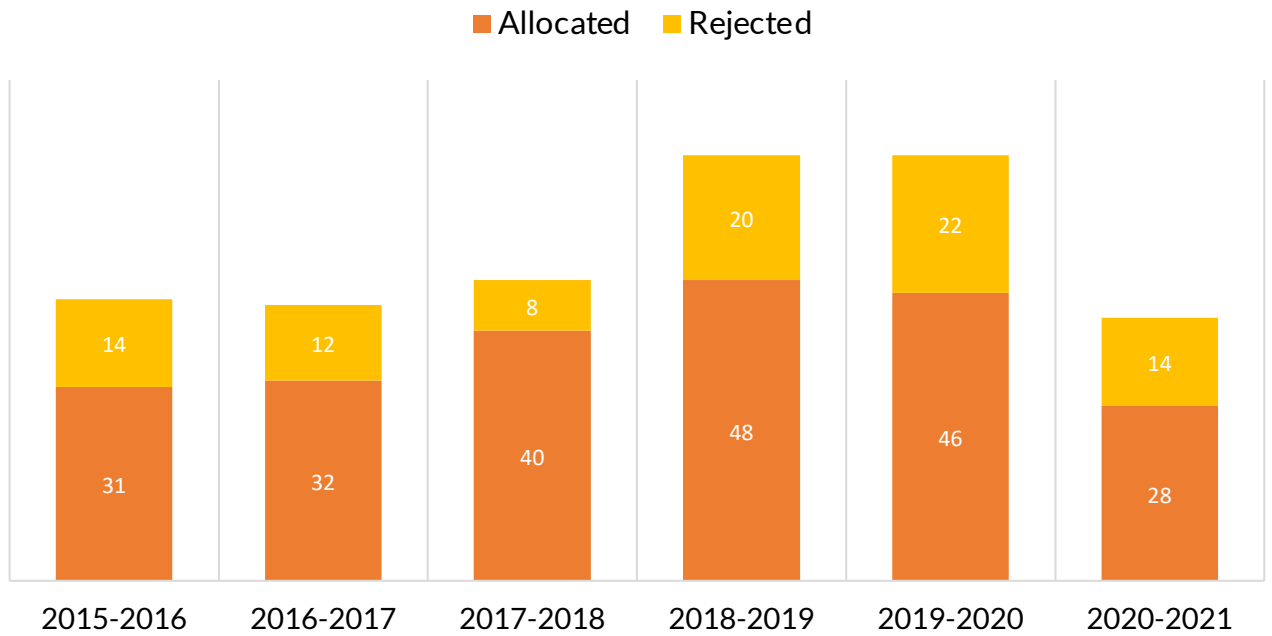
## Multi-Year Trend Metrics

### KPI 9. Quantity of Applications By Funding Decision

This graph shows how many project applications the Board of Directors decided to either reject, partially fund or fully fund. Unlike prior years our Board of Directors fully funded more applications than partially funded.

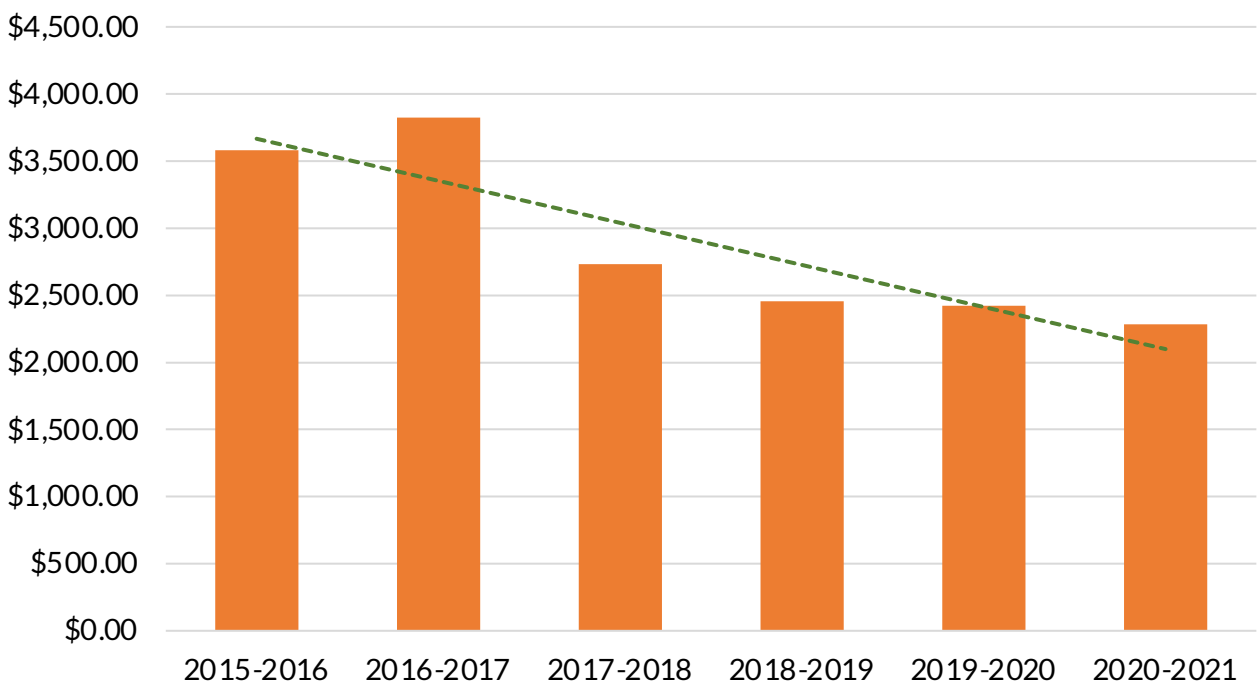


## KPI 10. Total Amount of Applicants



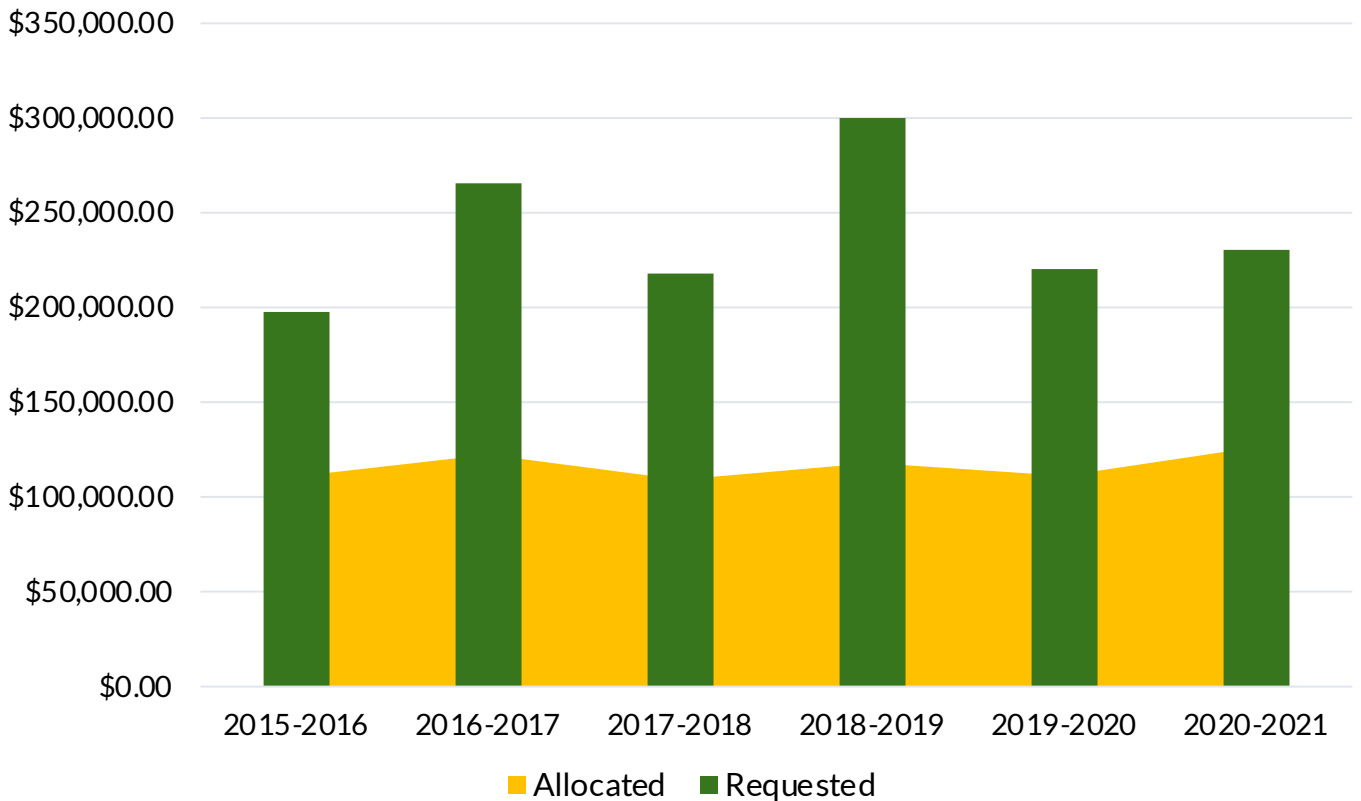
Due to remote learning challenges and the global pandemic, we received less applications than we have received in the two years prior. This year, the total volume of applications was closer to pre-2018 levels.

## KPI 10. Average Amount Funded Per Project



When we exclude the Living Lab projects, the average amount funded per project is aligned with our multi-year downward trend. Including the Living Lab projects our average amount funded per projects is skewed and jumps up to \$4513 per project.

# KPI 11. Funding Gap



Despite the smaller number of applications we received, the funding gap between the total amount requested from applicants and the amount we allocated remained close to prior year levels. In Addition, this year SAF allocated the greatest amount of funds to date, with a \$126,374.75 budget.

## Conclusion

We at the SAF are happy to report that we have completed another successful year of funding sustainable and inclusive projects. We are very impressed with all our project leaders for pulling off successful projects despite the many challenges due to Covid-19. With long-term sustainability in mind, we look forward to the new project applications for the 2021-2022 academic year. Future project applications, along with SAF led projects and events, will be considered based on our 2021 - 2024 strategic directions that are published on our website. These strategic directions have been created in line with the current needs and values of the Concordia community and with sustainability in mind. As a final note, the staff at the SAF would like to thank all future and past project applicants, as well as our Board of Directors who work on a volunteer basis to help make SAF a successful Organization!